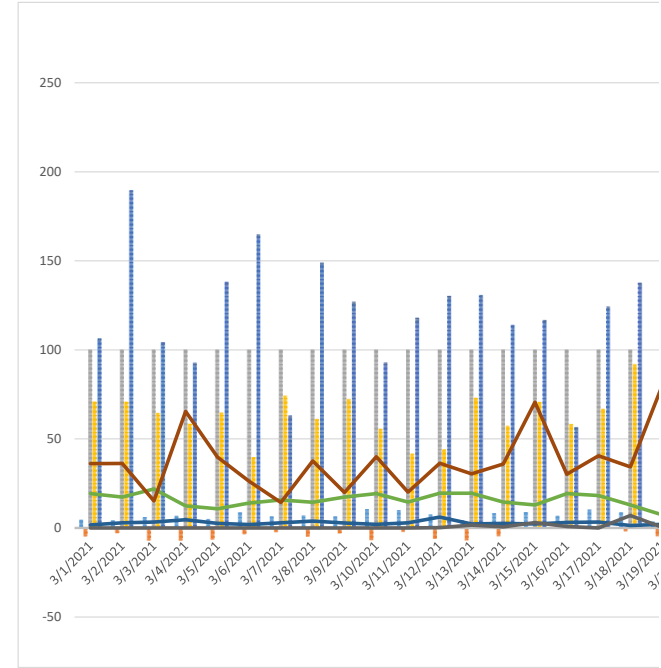


# CARI Weather Station

Month: March 31/2021      Lat N 07° 00.344'      Lon 09° 34.301'      Attitude 273m

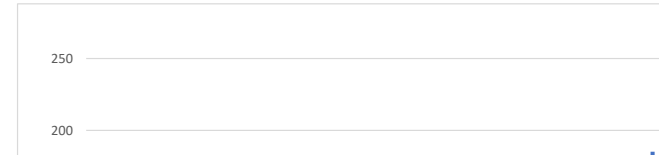
Observation Date	Max of AirTemp.Avg	Min of AirTemp.Avg	Max of Humidity.Avg	Min of Humidity.Avg	Average of WindDir.Avg	Max of WindSpd.Avg	Min of WindSpd.Avg	Solar Radiation.Avg	CUM Rainfall
3/1/2021	4.8	-4.4	100.0	70.9	106.4	19.3	1.7	36.1	0.0
3/2/2021	4.4	-2.7	100.0	70.7	189.6	17.3	2.9	36.2	0.0
3/3/2021	6.1	-6.7	100.0	64.6	104.4	21.9	3.3	15.2	0.0
3/4/2021	6.9	-6.7	100.0	58.5	93.0	12.4	4.6	65.4	0.0
3/5/2021	5.2	-6.1	100.0	64.7	138.3	10.8	2.6	39.8	0.0
3/6/2021	8.7	-3.2	100.0	39.8	164.9	14.0	1.9	26.2	0.0
3/7/2021	6.7	-2.2	100.0	74.2	63.2	15.7	2.9	14.4	0.0
3/8/2021	7.1	-4.5	100.0	61.0	149.0	14.4	3.9	37.7	0.0
3/9/2021	6.7	-2.8	100.0	72.3	127.1	17.4	2.8	19.9	0.0
3/10/2021	10.4	-6.4	100.0	55.6	93.0	19.3	2.0	40.0	0.0
3/11/2021	10.0	-1.9	100.0	41.7	118.1	14.6	2.9	20.1	0.0
3/12/2021	7.5	-5.7	100.0	44.1	130.5	19.5	6.1	36.3	0.2
3/13/2021	4.4	-6.5	100.0	72.9	131.0	19.5	2.2	30.4	1.6
3/14/2021	8.3	-4.3	100.0	57.4	114.2	14.6	2.6	36.0	0.6
3/15/2021	8.9	0.2	100.0	70.6	117.0	12.9	2.2	70.6	3.0
3/16/2021	6.9	-0.2	100.0	58.2	56.8	19.3	3.1	30.2	0.8
3/17/2021	10.2	0.6	100.0	66.9	124.5	18.2	3.3	40.6	0.0
3/18/2021	8.7	-1.7	100.0	91.7	137.7	12.9	1.4	34.3	7.0
3/19/2021	3.7	-4.3	100.0	91.0	148.8	7.4	2.0	79.8	0.4
3/20/2021	9.0	-2.8	100.0	48.8	102.4	18.7	5.5	56.5	3.2
3/21/2021	7.0	-5.5	100.0	68.4	146.3	19.5	3.2	61.1	1.6
3/22/2021	8.9	0.1	100.0	86.7	117.3	15.6	2.9	13.5	7.4
3/23/2021	7.4	-1.2	100.0	54.5	152.3	8.3	2.3	93.9	0.8
3/24/2021	9.1	-5.6	100.0	81.8	167.0	21.9	1.8	44.3	12.2
3/25/2021	5.4	0.3	100.0	92.7	134.2	11.2	2.0	92.3	2.2
3/26/2021	10.5	-1.7	100.0	100.0	182.7	13.5	2.5	23.6	6.4
3/27/2021	9.8	-3.2	100.0	80.0	235.0	19.3	7.3	64.4	1.2
3/28/2021	8.9	-3.4	100.0	72.5	150.7	18.5	7.4	119.5	1.0
3/29/2021	12.9	0.2	100.0	58.1	83.1	11.2	4.0	38.5	4.6
3/30/2021	7.6	3.3	100.0	65.4	169.9	16.8	2.8	49.1	0.0
3/31/2021	9.7	2.1	100.0	66.0	85.1	9.8	3.4	26.8	2.2
<b>Monthly Summary</b>	<b>7.8</b>	<b>-2.8</b>	<b>100.0</b>	<b>67.8</b>	<b>130.1</b>	<b>15.7</b>	<b>3.2</b>	<b>44.9</b>	<b>56.4</b>



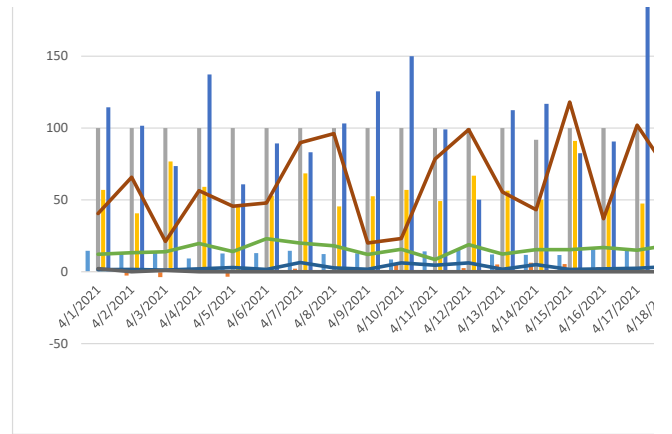
# CARI Weather Station

Month: April 30/2021      Lat N 07° 00.344'      Lon 09° 34.301'      Attitude 273m

Observation Date	Max of AirTemp.Avg	Min of AirTemp.Avg	Max of Humidity.Avg	Min of Humidity.Avg	Average of WindDir.Avg	Max of WindSpd.Avg	Min of WindSpd.Avg	Solar Radiation.Avg	CUM Rainfall
4/1/2021	14.6	0.2	100.0	56.9	114.4	12.2	1.5	40.6	2.2
4/2/2021	13.3	-2.6	100.0	40.6	101.6	13.3	1.6	65.8	0.0
4/3/2021	14.0	-3.7	100.0	76.7	73.6	13.9	1.2	21.1	1.0



4/4/2021	9.2	1.8	100.0	59.1	137.3	19.7	2.0	56.5	0.0
4/5/2021	12.7	-3.4	100.0	46.1	60.9	14.1	3.0	45.7	0.0
4/6/2021	13.0	0.8	100.0	52.9	89.3	23.0	1.6	47.9	0.0
4/7/2021	14.6	2.1	100.0	68.5	83.2	19.9	6.4	89.8	0.0
4/8/2021	12.3	0.2	100.0	45.5	103.2	18.0	2.7	96.1	0.0
4/9/2021	12.8	-0.4	100.0	52.6	125.5	12.0	1.7	20.0	0.0
4/10/2021	8.6	4.7	100.0	56.9	150.0	15.7	6.2	23.1	0.0
4/11/2021	14.2	1.0	100.0	49.2	99.1	8.5	4.5	78.4	0.0
4/12/2021	15.6	2.5	100.0	66.9	50.1	18.8	6.2	98.9	0.0
4/13/2021	12.1	5.1	100.0	56.4	112.4	12.3	1.8	55.5	0.0
4/14/2021	11.8	6.3	91.9	50.2	116.8	15.4	5.0	43.3	0.0
4/15/2021	11.6	5.3	100.0	91.1	82.5	15.4	1.6	118.1	0.0
4/16/2021	16.3	3.2	100.0	45.5	90.7	16.8	2.0	36.9	0.0
4/17/2021	15.2	1.9	100.0	47.5	185.2	15.0	2.4	102.0	0.0
4/18/2021	14.3	1.1	100.0	47.8	130.4	18.7	3.8	67.1	0.0
4/19/2021	18.2	3.4	100.0	39.3	103.5	21.1	2.7	29.8	0.0
4/20/2021	18.8	2.5	100.0	40.2	102.5	19.7	5.4	112.6	0.0
4/21/2021	14.3	5.5	100.0	67.1	127.0	16.8	5.8	42.7	0.0
4/22/2021	14.3	1.6	100.0	50.5	200.1	14.2	2.9	55.6	0.0
4/23/2021	17.3	5.5	100.0	67.7	81.6	17.0	1.8	66.3	0.0
4/24/2021	16.2	3.1	100.0	57.2	87.0	11.2	2.7	85.6	0.0
4/25/2021	17.7	6.3	100.0	49.6	133.2	9.0	2.0	109.2	0.0
4/26/2021	16.5	3.5	100.0	75.7	145.3	19.5	1.3	37.9	0.0
4/27/2021	15.8	5.1	100.0	55.6	154.1	15.9	4.6	58.5	0.0
4/28/2021	16.7	5.7	100.0	52.8	122.7	11.3	1.7	83.3	0.0
4/29/2021	18.6	3.2	100.0	60.5	200.3	16.4	3.1	85.6	0.0
4/30/2021	18.6	2.7	100.0	56.8	166.4	13.0	7.0	41.5	0.2
<b>Monthly Summary</b>	<b>14.6</b>	<b>2.5</b>	<b>99.7</b>	<b>56.1</b>	<b>117.7</b>	<b>15.6</b>	<b>3.2</b>	<b>63.8</b>	<b>3.4</b>



## CARI Weather Station

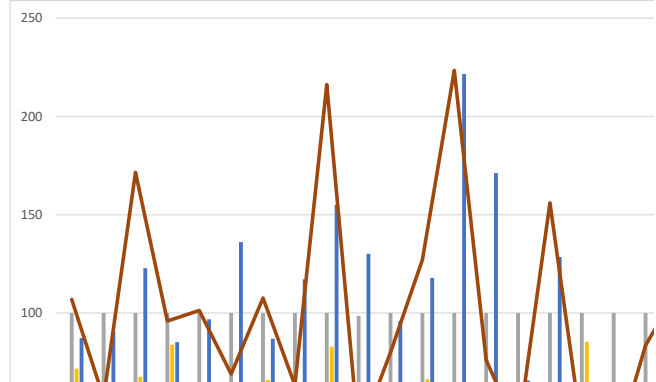
Month: May 5/31/2021

Lat N 07° 00.344'

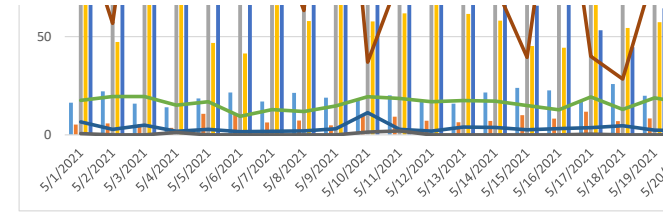
Lon 09° 34.301'

Attitude 273m

Observation Date	Max of AirTemp.Avg	Min of AirTemp.Avg	Max of Humidity.Avg	Min of Humidity.Avg	Average of WindDir.Avg	Max of WindSpd.Avg	Min of WindSpd.Avg	Solar Radiation.Avg	CUM Rainfall
5/1/2021	16.4	5.2	100.0	71.7	87.3	17.6	6.6	106.8	0.6
5/2/2021	22.1	5.8	100.0	47.3	90.6	19.5	2.8	56.8	0.0
5/3/2021	15.9	5.5	100.0	67.6	122.8	19.5	4.9	171.6	0.0
5/4/2021	14.0	3.6	100.0	83.9	85.2	15.1	1.8	95.9	1.2
5/5/2021	18.5	10.7	100.0	46.8	96.8	16.9	2.8	101.3	0.0
5/6/2021	21.6	10.4	100.0	41.4	136.0	9.4	1.6	69.0	0.0
5/7/2021	17.0	6.3	100.0	66.0	86.9	12.9	1.8	107.7	0.0
5/8/2021	21.4	7.3	100.0	57.9	117.1	11.9	2.0	63.3	0.0
5/9/2021	18.9	4.8	100.0	82.8	155.1	14.7	3.1	216.2	0.0
5/10/2021	17.6	10.3	98.6	57.7	130.2	19.4	11.3	37.0	1.4
5/11/2021	20.1	9.2	100.0	61.8	95.9	18.5	2.8	80.0	2.0
5/12/2021	17.4	7.2	100.0	66.3	117.8	16.9	1.9	127.1	0.0
5/13/2021	15.9	6.4	100.0	61.5	221.6	17.5	4.0	223.4	0.0



5/14/2021	21.6	7.1	100.0	58.1	171.2	17.2	3.8	76.1	0.0
5/15/2021	23.9	10.0	100.0	45.2	65.8	14.9	2.6	39.5	0.0
5/16/2021	22.6	8.3	100.0	44.3	128.4	12.8	3.2	156.0	0.0
5/17/2021	16.9	11.8	100.0	85.4	53.3	19.3	3.7	39.9	0.4
5/18/2021	25.9	7.0	100.0	54.4	44.7	13.0	4.7	28.4	0.0
5/19/2021	19.9	8.4	100.0	57.3	64.3	18.8	2.4	83.5	0.0
5/20/2021	25.1	11.7	100.0	62.8	80.7	16.1	2.1	111.7	0.0
5/21/2021	21.8	14.2	100.0	45.4	112.5	20.6	2.2	73.6	0.0
5/22/2021	23.4	7.1	100.0	62.0	154.3	20.6	3.8	177.1	0.0
5/23/2021	22.2	12.1	100.0	55.8	97.5	16.0	1.4	142.1	0.0
5/24/2021	24.0	12.9	100.0	54.0	142.8	9.2	2.0	105.5	0.0
5/25/2021	20.9	14.2	100.0	74.5	75.9	10.4	2.7	222.0	0.0
5/26/2021	22.6	14.5	100.0	61.8	85.7	16.0	4.0	113.0	0.0
5/27/2021	26.0	10.4	100.0	56.3	126.1	11.6	1.4	96.6	0.0
5/28/2021	23.3	13.5	100.0	84.1	163.8	7.9	2.4	43.0	0.0
5/29/2021	22.8	10.8	100.0	59.2	92.1	15.4	7.1	88.8	0.0
5/30/2021	27.7	10.9	100.0	37.4	120.8	19.4	1.7	78.0	0.0
5/31/2021	21.4	11.9	100.0	53.9	150.4	19.2	2.2	169.4	0.0
<b>Monthly Summary</b>	<b>20.9</b>	<b>9.3</b>	<b>100.0</b>	<b>60.1</b>	<b>112.0</b>	<b>15.7</b>	<b>3.3</b>	<b>106.5</b>	<b>5.6</b>



## CARI Weather Station

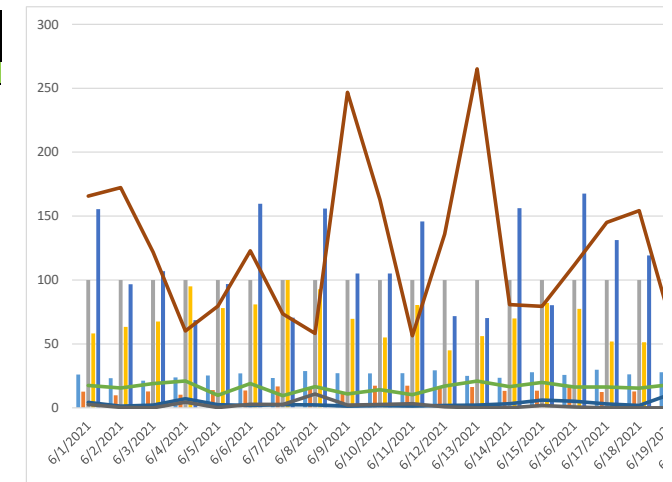
Month: June 6/30/2021

Lat N 07° 00.344'

Lon 09° 34.301'

Attitude 273m

Observation Date	Max of AirTemp.Avg	Min of AirTemp.Avg	Max of Humidity.Avg	Min of Humidity.Avg	Average of WindDir.Avg	Max of WindSpd.Avg	Min of WindSpd.Avg	Solar Radiation.Avg	CUM Rainfall
6/1/2021	26.0	12.6	100.0	58.2	155.5	17.5	4.2	165.7	2.6
6/2/2021	23.2	9.8	100.0	63.3	96.8	15.5	1.3	172.3	0.4
6/3/2021	21.3	12.8	100.0	67.5	107.0	19.0	2.1	121.7	0.0
6/4/2021	23.8	10.2	100.0	95.0	68.5	21.0	7.1	60.1	4.4
6/5/2021	25.3	13.8	100.0	78.1	96.8	9.8	2.4	79.6	0.2
6/6/2021	27.0	13.5	100.0	80.9	159.6	19.0	1.8	122.8	2.8
6/7/2021	23.4	16.7	100.0	100.0	70.5	9.5	2.4	73.5	2.6
6/8/2021	28.8	15.0	100.0	92.7	156.0	16.6	2.3	58.2	10.8
6/9/2021	27.1	11.3	100.0	69.6	105.2	10.8	1.3	246.9	2.2
6/10/2021	26.9	17.3	100.0	55.0	105.1	14.2	1.7	162.8	2.6
6/11/2021	27.1	17.3	100.0	80.4	145.8	10.3	1.4	56.4	3.2
6/12/2021	29.4	16.5	100.0	45.0	71.7	17.0	1.8	135.9	0.8
6/13/2021	25.0	16.3	100.0	56.1	70.3	20.9	2.1	265.2	0.0
6/14/2021	23.5	13.3	100.0	70.0	156.1	16.6	3.2	80.8	0.0
6/15/2021	27.9	13.4	100.0	82.1	80.3	19.9	6.0	79.4	1.8
6/16/2021	25.7	15.7	100.0	77.5	167.6	16.3	5.1	111.8	0.6
6/17/2021	29.8	12.3	100.0	51.9	131.3	16.3	3.0	145.0	0.0
6/18/2021	26.2	12.8	100.0	51.3	119.3	15.4	1.8	154.2	0.0
6/19/2021	27.9	13.3	100.0	46.8	66.0	18.2	10.9	65.5	0.0
6/20/2021	25.4	15.2	100.0	75.7	107.8	14.5	2.3	169.4	0.0
6/21/2021	27.8	14.4	100.0	47.2	109.3	15.4	2.9	65.0	0.0
6/22/2021	23.0	11.5	100.0	92.9	174.7	17.5	2.7	61.4	0.0



6/23/2021	24.0	14.9	100.0	60.5	139.2	18.9	2.6	119.6	0.0
6/24/2021	25.7	16.4	100.0	70.5	84.9	18.6	5.2	43.9	0.0
6/25/2021	24.5	14.3	100.0	54.3	48.7	16.8	1.7	250.1	0.0
6/26/2021	23.7	11.1	100.0	65.0	92.5	16.2	1.7	161.9	0.0
6/27/2021	25.5	14.9	83.1	56.0	137.7	20.3	5.9	69.9	0.0
6/28/2021	27.4	14.9	100.0	61.7	84.8	8.9	1.6	85.4	0.0
6/29/2021	24.0	12.8	100.0	81.6	153.9	17.7	2.6	78.0	0.0
6/30/2021	24.6	17.9	100.0	69.6	189.4	11.6	1.9	201.9	0.0
<b>Monthly Summary</b>	<b>25.7</b>	<b>14.1</b>	<b>99.4</b>	<b>68.5</b>	<b>115.1</b>	<b>16.0</b>	<b>3.1</b>	<b>122.1</b>	<b>35.0</b>

## CARI Weather Station

## CARI Weather Station

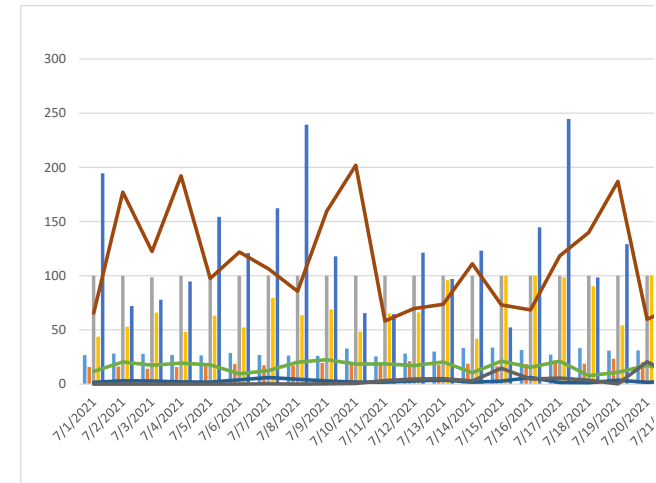
Month: July 7/31/2021

Lat N 07° 00.344'

Lon 09° 34.301'

Attitude 273m

Observation Date	Max of AirTemp.Avg	Min of AirTemp.Avg	Max of Humidity.Avg	Min of Humidity.Avg	Average of WindDir.Avg	Max of WindSpd.Avg	Min of WindSpd.Avg	Solar Radiation.Avg	CUM Rainfall
7/1/2021	26.8	15.8	100.0	43.9	194.5	11.7	1.7	65.5	0.0
7/2/2021	28.2	16.1	99.8	52.9	72.0	20.5	3.0	177.2	0.0
7/3/2021	27.8	14.2	98.6	66.0	77.8	17.4	2.8	122.4	0.0
7/4/2021	26.9	15.9	100.0	48.2	94.6	19.4	2.0	192.2	0.0
7/5/2021	26.5	17.3	100.0	63.1	154.3	17.8	1.8	97.6	0.0
7/6/2021	28.7	18.5	100.0	52.4	121.0	9.5	3.9	121.9	0.0
7/7/2021	26.8	17.4	100.0	79.7	162.2	12.4	6.0	106.4	0.2
7/8/2021	26.2	17.3	100.0	63.5	239.4	20.2	4.4	85.7	0.0
7/9/2021	26.1	19.6	100.0	68.9	118.0	22.5	2.9	159.7	0.2
7/10/2021	32.9	20.6	100.0	48.4	65.5	18.5	1.8	201.9	0.6
7/11/2021	25.5	19.0	100.0	65.2	64.5	18.6	1.9	58.2	3.2
7/12/2021	28.2	21.1	100.0	66.2	121.4	17.0	2.9	69.8	4.6
7/13/2021	30.0	18.0	100.0	95.9	97.1	20.4	3.8	73.5	5.0
7/14/2021	33.4	18.8	100.0	41.8	123.0	10.5	1.8	111.0	2.8
7/15/2021	33.8	16.6	100.0	100.0	52.3	21.1	2.7	73.2	14.6
7/16/2021	31.4	18.5	100.0	99.8	144.7	15.5	6.0	68.5	4.6
7/17/2021	27.2	21.8	100.0	98.6	244.7	21.1	1.4	118.4	5.6
7/18/2021	33.2	18.8	100.0	90.3	98.4	7.8	1.3	139.9	3.6
7/19/2021	30.9	23.5	100.0	54.2	129.0	10.8	3.6	187.0	0.2
7/20/2021	31.0	20.3	100.0	100.0	135.3	17.2	1.7	59.9	20.6
7/21/2021	30.6	24.1	100.0	100.0	117.7	11.6	2.8	72.2	7.2
7/22/2021	30.6	25.3	100.0	70.5	193.9	17.9	1.6	37.5	1.6
7/23/2021	31.6	22.0	100.0	81.8	81.7	10.5	2.2	89.1	0.2
7/24/2021	34.2	19.7	100.0	71.1	173.0	14.1	1.6	147.5	5.4
7/25/2021	31.2	26.2	100.0	100.0	44.6	19.2	1.4	44.5	8.6
7/26/2021	33.9	26.1	100.0	65.0	102.1	11.7	2.2	206.6	7.4
7/27/2021	34.3	25.4	100.0	50.6	112.1	13.9	3.7	70.5	0.2
7/28/2021	34.0	24.3	100.0	72.7	149.5	15.8	6.1	206.7	0.6
7/29/2021	33.3	22.2	100.0	100.0	194.7	18.3	4.0	53.8	9.0
7/30/2021	37.2	22.1	100.0	53.8	160.3	13.9	1.7	110.8	2.6
7/31/2021	34.1	24.1	100.0	59.4	134.0	17.0	10.1	123.1	0.8

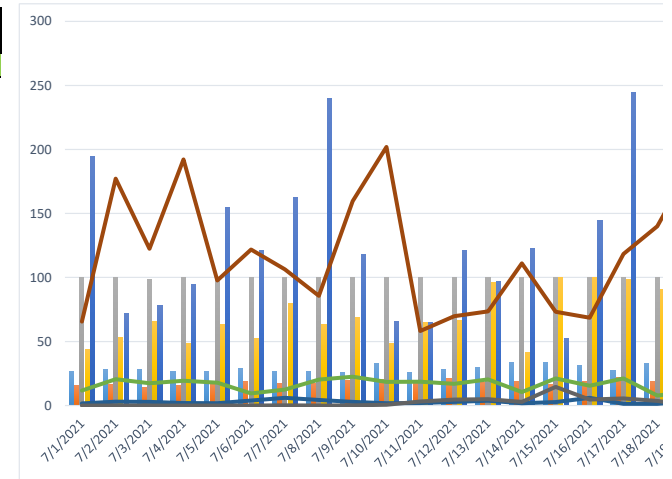


Monthly Summary	30.5	20.3	99.9	71.7	128.2	15.9	3.1	111.4	109.4
-----------------	------	------	------	------	-------	------	-----	-------	-------

## CARI Weather Station

Month: August 8/31/2021 Lat N 07° 00.344' Lon 09° 34.301' Attitude 273m

Observation Date	Max of AirTemp.Avg	Min of AirTemp.Avg	Max of Humidity.Avg	Min of Humidity.Avg	Average of WindDir.Avg	Max of WindSpd.Avg	Min of WindSpd.Avg	Solar Radiation.Avg	CUM Rainfall
8/1/2021	38.2	23.3	100.0	64.3	111.3	16.8	2.5	32.1	9.2
8/2/2021	37.3	23.2	100.0	54.4	61.6	10.6	2.6	77.8	0.0
8/3/2021	35.2	25.2	100.0	50.5	143.9	16.5	3.7	37.8	0.0
8/4/2021	34.2	25.5	100.0	70.9	81.7	18.3	9.0	68.9	0.0
8/5/2021	36.3	24.2	100.0	57.5	66.0	13.0	3.1	89.4	0.0
8/6/2021	38.6	22.4	100.0	68.3	176.3	12.5	4.3	182.5	0.0
8/7/2021	33.2	22.1	100.0	53.6	104.1	11.1	3.4	223.8	0.0
8/8/2021	33.7	19.7	100.0	55.0	85.0	18.4	2.2	113.7	0.0
8/9/2021	36.6	20.7	100.0	58.3	96.8	18.2	5.5	56.9	0.0
8/10/2021	32.2	19.4	100.0	59.0	109.8	15.0	1.8	90.5	0.0
8/11/2021	30.8	25.5	100.0	61.0	104.5	17.5	1.9	44.9	0.0
8/12/2021	31.0	22.8	100.0	60.4	114.3	15.3	2.3	53.6	0.0
8/13/2021	36.0	21.7	100.0	46.9	108.0	13.2	3.3	60.8	0.0
8/14/2021	31.7	26.9	100.0	65.1	74.3	14.7	2.1	63.5	0.0
8/15/2021	30.3	23.1	100.0	74.7	81.1	11.4	3.0	53.6	0.0
8/16/2021	30.9	20.6	100.0	59.1	129.7	15.5	2.0	187.3	0.0
8/17/2021	33.4	25.3	100.0	55.4	81.2	14.7	2.1	155.1	0.0
8/18/2021	35.9	21.0	100.0	46.2	82.1	18.1	4.6	40.6	0.0
8/19/2021	36.4	25.7	100.0	72.8	139.3	15.2	2.8	121.1	0.0
8/20/2021	29.5	24.6	100.0	85.5	127.4	18.4	2.2	22.8	0.0
8/21/2021	32.2	23.5	100.0	52.3	79.7	18.0	5.0	68.1	0.0
8/22/2021	32.6	24.3	97.6	60.3	94.7	13.3	1.8	61.3	0.0
8/23/2021	29.3	23.0	100.0	59.7	53.1	19.8	4.5	42.2	0.0
8/24/2021	36.2	23.9	100.0	41.7	165.2	16.5	5.0	96.6	0.0
8/25/2021	32.6	21.8	100.0	51.5	122.6	20.9	1.5	82.0	0.0
8/26/2021	30.5	21.1	100.0	68.1	82.6	20.1	2.9	49.1	1.0
8/27/2021	33.5	16.9	100.0	67.8	186.9	17.7	2.1	97.1	0.0
8/28/2021	34.5	21.1	100.0	70.3	70.4	17.1	2.0	59.3	0.2
8/29/2021	35.3	20.1	100.0	62.7	198.8	17.6	4.8	94.6	0.4
8/30/2021	32.8	17.2	100.0	96.2	118.5	17.9	2.6	44.4	1.6
8/31/2021	35.6	23.5	100.0	46.3	132.4	20.9	10.4	61.4	2.8
Monthly Summary	33.8	22.6	99.9	61.2	109.1	16.3	3.5	81.7	15.2

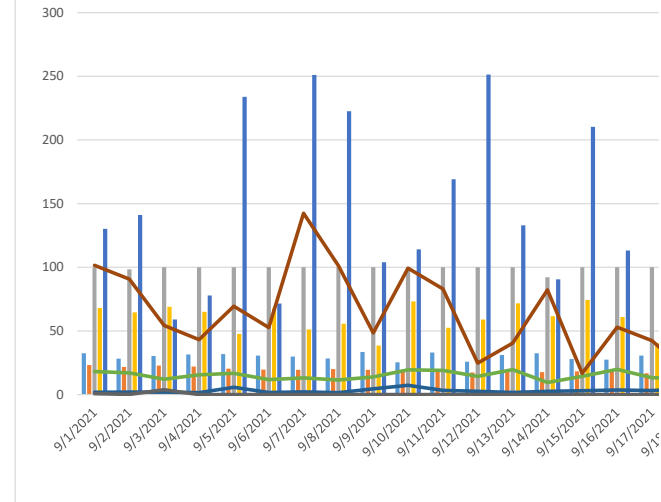


## CARI Weather Station

Month: September 8/30/2021 Lat N 07° 00.344' Lon 09° 34.301' Attitude 273m

Observation Date	Max of AirTemp.Avg	Min of AirTemp.Avg	Max of Humidity.Avg	Min of Humidity.Avg	Average of WindDir.Avg	Max of WindSpd.Avg	Min of WindSpd.Avg	Solar Radiation.Avg	CUM Rainfall
------------------	--------------------	--------------------	---------------------	---------------------	------------------------	--------------------	--------------------	---------------------	--------------

Date	Max of AirTemp.Avg	Min of AirTemp.Avg	Max of Humidity.Avg	Min of Humidity.Avg	Average of WindDir.Avg	Max of WindSpd.Avg	Min of WindSpd.Avg	Solar Radiation.Avg	CUM Rainfall
9/1/2021	32.5	23.3	100.0	68.1	130.2	18.1	1.8	101.5	0.8
9/2/2021	28.2	21.7	98.4	64.5	141.0	17.0	1.9	90.6	3.8
9/3/2021	30.3	22.8	100.0	69.0	59.0	12.0	1.9	54.3	0.2
9/4/2021	31.5	22.0	100.0	65.0	77.9	15.6	1.5	43.1	0.0
9/5/2021	31.8	20.4	100.0	47.6	233.8	16.7	5.8	69.4	0.0
9/6/2021	30.6	19.6	100.0	67.8	71.5	11.8	1.6	52.7	0.0
9/7/2021	29.9	19.4	100.0	51.1	251.1	13.1	2.1	142.4	0.0
9/8/2021	28.4	20.1	100.0	55.7	222.5	11.4	1.5	101.3	0.0
9/9/2021	33.5	19.4	100.0	38.5	103.9	13.8	4.5	48.5	0.0
9/10/2021	25.4	19.5	100.0	73.2	114.1	19.5	7.3	99.3	0.0
9/11/2021	33.0	19.0	100.0	52.5	169.1	19.0	3.3	83.0	0.0
9/12/2021	25.8	17.4	100.0	59.0	251.4	14.3	2.5	24.7	0.0
9/13/2021	31.0	19.0	100.0	71.6	133.0	19.6	1.6	40.5	0.0
9/14/2021	32.5	17.6	92.2	61.6	90.5	9.5	2.6	82.3	0.0
9/15/2021	27.9	18.3	100.0	74.4	210.4	14.3	3.0	16.8	0.0
9/16/2021	27.4	17.9	100.0	60.9	113.2	19.8	3.6	52.9	0.0
9/17/2021	30.6	16.8	100.0	40.4	108.0	13.2	3.2	42.4	0.0
9/18/2021	28.2	15.1	100.0	47.2	105.3	12.5	4.7	17.9	0.0
9/19/2021	27.8	15.8	100.0	51.2	130.1	19.3	1.9	31.1	0.0
9/20/2021	25.6	13.5	100.0	71.8	159.3	15.0	4.0	30.0	0.0
9/21/2021	25.9	15.9	100.0	72.4	148.8	14.8	2.0	18.7	0.0
9/22/2021	26.6	15.1	100.0	69.8	97.2	8.1	1.4	4.5	0.0
9/23/2021	22.6	13.3	100.0	66.3	99.4	11.5	1.6	31.8	0.0
9/24/2021	28.9	16.5	88.1	53.8	177.5	18.3	1.3	27.3	0.0
9/25/2021	27.6	15.0	100.0	67.2	96.3	10.1	2.9	103.4	0.0
9/26/2021	20.4	11.6	100.0	82.9	83.7	15.5	1.6	29.2	0.0
9/27/2021	26.5	12.1	100.0	72.1	171.8	11.5	1.4	83.3	0.0
9/28/2021	27.0	14.6	100.0	62.1	83.8	15.4	3.9	26.4	0.0
9/29/2021	25.8	15.8	100.0	72.7	138.1	11.1	4.3	58.0	0.0
9/30/2021	25.2	16.1	100.0	46.2	143.5	19.8	1.8	25.5	0.0
<b>Monthly Summary</b>	<b>28.3</b>	<b>17.5</b>	<b>99.3</b>	<b>61.9</b>	<b>137.2</b>	<b>14.7</b>	<b>2.8</b>	<b>54.4</b>	<b>4.8</b>



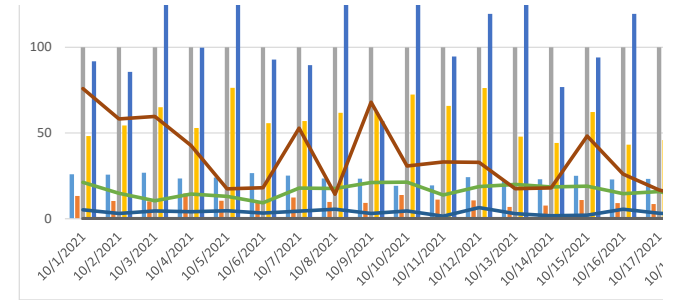
## CARI Weather Station

Month: **October 10/31/2021**      Lat **N 07° 00.344'**      Lon **09° 34.301'**      Attitude **273m**

Observation Date	Max of AirTemp.Avg	Min of AirTemp.Avg	Max of Humidity.Avg	Min of Humidity.Avg	Average of WindDir.Avg	Max of WindSpd.Avg	Min of WindSpd.Avg	Solar Radiation.Avg	CUM Rainfall
10/1/2021	26.0	13.3	100.0	48.3	91.8	21.2	5.2	75.9	0.0
10/2/2021	25.7	10.4	100.0	54.4	85.7	14.9	3.1	58.3	0.0
10/3/2021	26.9	10.1	100.0	65.1	144.3	10.5	4.6	59.7	0.0
10/4/2021	23.5	14.7	100.0	52.9	99.8	14.4	4.1	42.8	0.0
10/5/2021	24.0	10.5	100.0	76.4	203.0	13.1	4.7	17.4	0.0
10/6/2021	26.6	10.0	100.0	55.8	92.8	9.3	3.3	18.1	0.0
10/7/2021	25.2	12.4	100.0	57.0	89.6	17.9	4.4	52.9	0.0



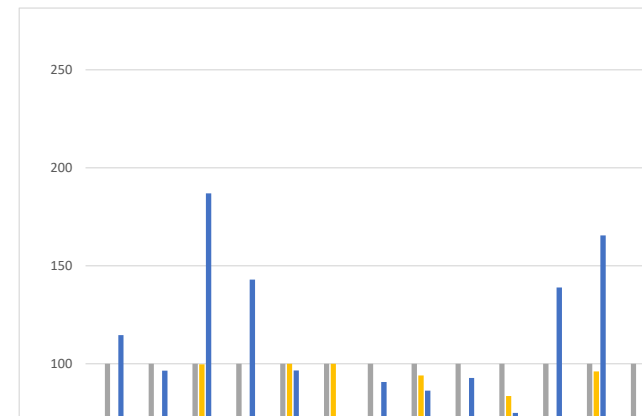
10/8/2021	23.5	9.8	100.0	61.8	153.9	17.7	5.6	14.3	0.0
10/9/2021	23.4	9.2	100.0	62.2	57.0	21.1	3.1	68.0	0.0
10/10/2021	19.2	13.9	99.9	72.4	130.9	21.4	4.5	30.8	0.0
10/11/2021	19.4	11.2	100.0	65.8	94.7	13.8	1.5	33.1	0.0
10/12/2021	24.3	10.7	100.0	76.3	119.5	18.8	6.5	32.9	0.0
10/13/2021	22.4	6.9	100.0	47.9	134.3	20.0	3.0	17.5	0.0
10/14/2021	23.0	7.7	100.0	44.2	76.8	18.5	1.8	18.0	0.0
10/15/2021	25.0	10.9	100.0	62.3	94.1	19.0	2.1	48.2	0.0
10/16/2021	22.9	9.1	100.0	43.2	119.5	14.6	5.6	26.0	0.0
10/17/2021	23.3	8.6	100.0	45.9	87.4	15.9	3.2	16.8	0.0
10/18/2021	22.9	7.9	100.0	62.7	98.7	11.3	2.0	11.7	0.0
10/19/2021	20.2	8.3	100.0	73.3	92.5	14.6	4.1	12.3	0.0
10/20/2021	23.6	11.5	100.0	40.5	171.8	10.9	5.4	22.0	0.0
10/21/2021	21.9	9.8	100.0	44.1	93.7	16.0	2.4	40.7	0.6
10/22/2021	21.9	10.0	100.0	51.9	173.2	14.1	1.6	35.5	1.2
10/23/2021	23.3	7.2	100.0	51.5	172.7	22.2	2.2	47.2	0.0
10/24/2021	20.7	9.9	100.0	68.4	205.3	16.9	1.7	11.3	5.4
10/25/2021	20.6	7.7	100.0	77.0	83.4	17.1	2.8	14.3	15.2
10/26/2021	17.7	9.7	100.0	100.0	87.7	16.4	4.1	6.5	11.0
10/27/2021	15.7	9.9	100.0	88.1	84.9	17.3	2.0	28.3	1.6
10/28/2021	19.5	5.8	100.0	61.1	128.3	13.7	4.8	25.3	0.4
10/29/2021	14.8	5.0	100.0	82.1	141.4	16.8	2.6	15.2	15.4
10/30/2021	17.3	6.0	100.0	100.0	119.5	10.5	1.8	9.5	17.2
10/31/2021	21.4	4.8	100.0	100.0	197.3	12.8	3.3	5.7	36.6
<b>Monthly Summary</b>	<b>22.1</b>	<b>9.4</b>	<b>100.0</b>	<b>64.3</b>	<b>120.2</b>	<b>15.9</b>	<b>3.5</b>	<b>29.6</b>	<b>104.6</b>



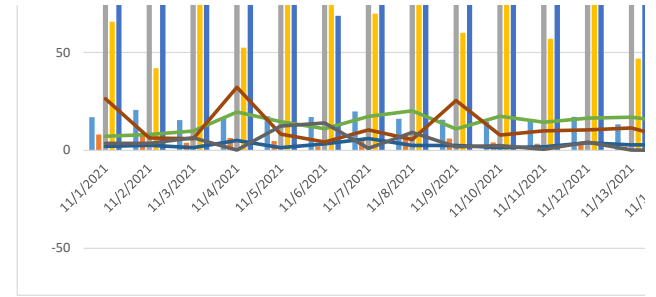
## CARI Weather Station

Month: November 11/30/2021 Lat N 07° 00.344' Lon 09° 34.301' Attitude 273m

Observation Date	Max of AirTemp.Avg	Min of AirTemp.Avg	Max of Humidity.Avg	Min of Humidity.Avg	Average of WindDir.Avg	Max of WindSpd.Avg	Min of WindSpd.Avg	Solar Radiation.Avg	CUM Rainfall
11/1/2021	16.9	8.1	100.0	65.7	114.6	7.2	2.0	26.3	3.6
11/2/2021	20.7	7.9	100.0	41.9	96.5	8.1	2.6	6.3	3.6
11/3/2021	15.5	3.9	100.0	99.7	187.0	9.9	1.4	6.0	6.4
11/4/2021	16.8	6.3	100.0	52.4	143.0	19.6	5.1	32.2	0.2
11/5/2021	17.4	4.8	100.0	100.0	96.5	14.7	1.4	8.3	12.4
11/6/2021	17.0	2.0	100.0	100.0	68.7	11.0	3.3	4.3	14.0
11/7/2021	19.9	6.2	100.0	69.8	90.6	17.3	6.0	10.5	1.0
11/8/2021	16.1	7.3	100.0	94.0	86.3	20.2	2.5	5.5	9.2
11/9/2021	15.7	6.0	100.0	60.0	92.8	10.9	2.5	25.5	1.8
11/10/2021	14.7	4.1	100.0	83.5	74.9	17.4	1.4	7.8	2.4
11/11/2021	15.5	3.4	100.0	56.9	138.9	14.4	1.8	10.0	0.6
11/12/2021	17.1	4.3	100.0	96.1	165.5	16.4	3.9	10.4	4.2
11/13/2021	13.3	1.9	100.0	46.8	184.3	16.9	2.8	11.5	0.2
11/14/2021	12.8	2.4	100.0	69.2	94.3	14.2	2.8	5.4	0.0
11/15/2021	14.8	5.4	99.4	73.0	87.2	14.9	2.8	15.5	0.6
11/16/2021	13.6	5.4	100.0	63.9	51.7	20.1	4.5	6.3	3.6



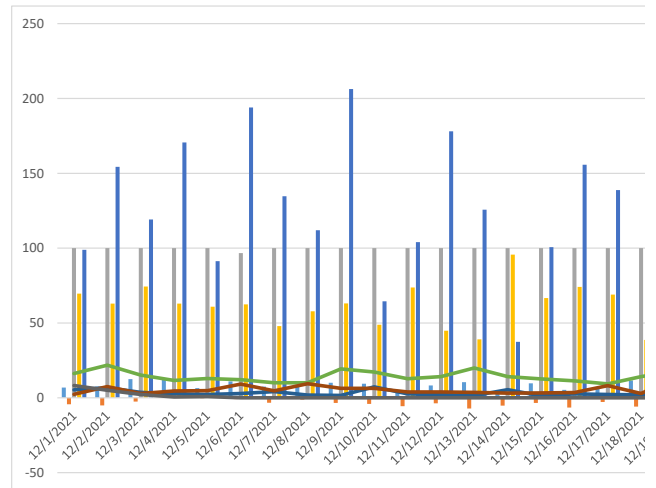
11/17/2021	13.1	1.7	100.0	61.1	192.4	19.0	2.5	14.2	0.0
11/18/2021	15.0	0.4	100.0	58.2	108.8	16.9	2.7	3.7	14.4
11/19/2021	10.7	1.7	100.0	69.4	68.6	16.9	2.4	8.6	0.2
11/20/2021	10.0	1.6	100.0	64.7	97.3	17.9	6.6	9.6	0.0
11/21/2021	8.7	0.7	100.0	86.0	87.2	17.5	5.5	2.7	11.0
11/22/2021	15.0	0.6	100.0	66.1	190.2	15.5	1.8	4.7	3.8
11/23/2021	7.4	5.0	100.0	92.2	94.1	19.6	6.7	5.5	6.4
11/24/2021	11.8	3.7	98.9	46.0	100.5	15.6	4.0	5.0	2.6
11/25/2021	10.0	-1.1	100.0	85.3	92.8	10.3	1.5	2.6	6.6
11/26/2021	13.6	2.1	100.0	42.4	74.5	13.6	1.8	13.3	0.0
11/27/2021	14.8	0.8	100.0	44.6	81.0	18.6	2.4	13.5	0.0
11/28/2021	11.5	-0.1	100.0	55.5	86.6	13.5	2.6	4.3	0.0
11/29/2021	11.3	-0.9	100.0	68.2	102.2	13.1	1.8	3.3	4.8
11/30/2021	10.2	-3.3	100.0	58.1	77.2	17.1	5.9	5.6	0.0
<b>Monthly Summary</b>	<b>14.0</b>	<b>3.1</b>	<b>99.9</b>	<b>69.0</b>	<b>107.5</b>	<b>15.3</b>	<b>3.2</b>	<b>9.6</b>	<b>113.6</b>



## CARI Weather Station

Month: December 12/31/2021 Lat N 07° 00.344' Lon 09° 34.301' Attitude 273m

Observation Date	Max of AirTemp.Avg	Min of AirTemp.Avg	Max of Humidity.Avg	Min of Humidity.Avg	Average of WindDir.Avg	Max of WindSpd.Avg	Min of WindSpd.Avg	Solar Radiation.Avg	CUM Rainfall
12/1/2021	6.8	-4.3	100.0	69.6	98.9	16.2	5.3	2.4	8.2
12/2/2021	7.5	-5.1	100.0	62.9	154.3	21.8	6.7	7.5	5.0
12/3/2021	12.5	-2.5	100.0	74.4	119.2	15.2	3.6	2.9	2.2
12/4/2021	12.5	1.1	100.0	62.9	170.7	11.6	2.7	4.6	0.6
12/5/2021	6.4	-0.4	100.0	60.9	91.3	12.9	2.2	4.8	0.8
12/6/2021	10.9	-0.9	96.7	62.4	194.0	12.1	2.9	9.2	0.0
12/7/2021	7.5	-3.3	100.0	47.9	134.6	10.0	4.2	4.7	0.0
12/8/2021	8.8	-1.2	100.0	57.8	112.0	10.0	1.9	9.4	0.0
12/9/2021	10.0	-3.4	100.0	63.1	206.3	19.3	1.6	6.4	0.0
12/10/2021	9.4	-4.0	100.0	48.8	64.5	17.2	7.3	6.3	0.0
12/11/2021	3.7	-5.6	100.0	73.7	104.0	12.7	2.6	3.8	0.0
12/12/2021	8.3	-3.7	100.0	44.8	178.1	14.1	2.1	4.0	0.0
12/13/2021	10.5	-7.2	100.0	39.1	125.7	20.0	1.4	3.7	0.0
12/14/2021	3.6	-5.2	100.0	95.7	37.4	14.1	5.4	3.2	0.0
12/15/2021	9.7	-3.4	100.0	66.7	100.7	12.6	1.3	3.2	0.0
12/16/2021	5.3	-6.5	100.0	74.1	155.8	11.3	2.6	3.5	0.0
12/17/2021	7.0	-2.8	100.0	69.0	138.8	9.3	2.2	8.2	0.0
12/18/2021	11.6	-5.9	100.0	38.7	73.9	14.2	2.0	2.8	0.0
12/19/2021	5.3	-1.8	100.0	85.7	195.5	17.8	2.8	13.8	0.0
12/20/2021	5.7	-2.6	100.0	78.3	153.2	14.7	2.1	2.6	0.0
12/21/2021	9.2	-6.5	100.0	47.5	162.7	16.5	2.0	14.5	0.0
12/22/2021	7.7	-1.5	100.0	61.7	163.9	19.0	1.3	1.2	0.0
12/23/2021	4.9	-3.3	100.0	75.3	88.2	13.9	6.7	6.2	0.0
12/24/2021	9.4	-7.2	100.0	46.9	77.6	15.8	2.3	12.8	0.0
12/25/2021	9.6	-2.3	100.0	55.3	181.7	17.6	2.4	12.9	0.0



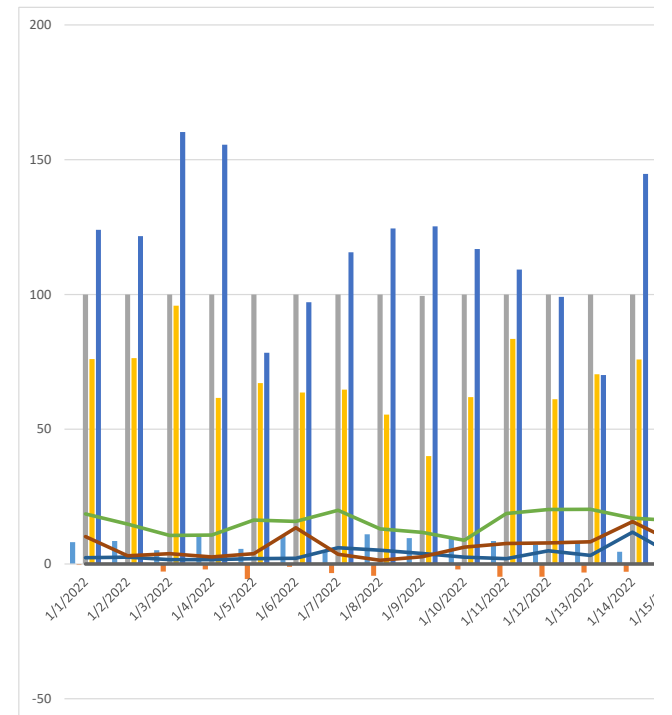


12/26/2021	6.8	-4.8	100.0	55.1	99.3	10.6	1.6	9.1	0.0
12/27/2021	4.9	-0.2	100.0	54.2	61.1	17.4	4.9	10.4	0.0
12/28/2021	9.4	-3.7	100.0	53.4	61.7	13.9	3.2	4.3	0.0
12/29/2021	9.1	0.8	100.0	41.5	157.8	15.6	2.3	4.8	0.0
12/30/2021	5.8	0.1	100.0	57.1	91.7	16.9	5.8	4.0	0.0
12/31/2021	7.1	-3.1	100.0	63.1	125.0	15.7	3.7	5.3	0.0
<b>Monthly Summary</b>	<b>8.0</b>	<b>-3.2</b>	<b>99.9</b>	<b>60.9</b>	<b>125.1</b>	<b>14.8</b>	<b>3.2</b>	<b>6.2</b>	<b>16.8</b>

## CARI Weather Station

**Month: January 1/31/2022**      **Lat N 07° 00.344'**      **Lon 09° 34.301'**      **Attitude 273m**

Observation Date	Max of AirTemp.Avg	Min of AirTemp.Avg	Max of Humidity.Avg	Min of Humidity.Avg	Average of WindDir.Avg	Max of WindSpd.Avg	Min of WindSpd.Avg	Solar Radiation.Avg	CUM Rainfall
1/1/2022	8.1	-0.4	100.0	76.0	124.0	18.6	2.3	10.2	0.0
1/2/2022	8.5	-0.3	100.0	76.4	121.7	14.8	2.5	3.0	0.0
1/3/2022	5.1	-2.8	100.0	95.8	160.3	10.6	1.6	3.8	0.0
1/4/2022	10.5	-2.0	100.0	61.6	155.6	10.7	1.6	2.6	0.0
1/5/2022	5.6	-5.6	100.0	67.1	78.4	16.3	2.0	3.8	0.0
1/6/2022	10.4	-1.0	100.0	63.6	97.1	15.8	2.1	13.5	0.0
1/7/2022	5.1	-3.4	100.0	64.7	115.6	19.9	6.0	3.6	0.0
1/8/2022	11.0	-4.4	100.0	55.4	124.5	13.0	5.1	1.4	0.0
1/9/2022	9.6	-0.4	99.5	40.0	125.3	11.7	3.9	2.7	0.0
1/10/2022	9.5	-2.0	100.0	61.9	116.9	8.8	2.5	6.3	0.0
1/11/2022	8.5	-4.7	100.0	83.5	109.3	18.7	2.0	7.6	0.0
1/12/2022	7.1	-4.7	100.0	61.1	99.1	20.2	4.9	7.8	0.0
1/13/2022	8.1	-3.2	100.0	70.4	70.1	20.3	3.2	8.3	0.0
1/14/2022	4.5	-2.9	100.0	75.9	144.7	17.0	11.8	15.8	0.0
1/15/2022	5.7	-4.0	100.0	51.5	121.4	16.1	3.0	8.0	0.0
1/16/2022	6.5	-2.6	100.0	64.0	70.4	18.7	4.2	4.5	0.0
1/17/2022	3.9	-4.9	100.0	77.3	54.0	17.5	2.5	9.0	0.0
1/18/2022	6.7	-8.2	100.0	41.4	146.7	12.8	2.0	7.3	0.0
1/19/2022	6.0	-6.4	100.0	61.4	177.6	14.0	4.7	5.8	0.0
1/20/2022	6.5	-8.9	100.0	73.2	88.5	14.7	2.8	7.6	0.0
1/21/2022	2.3	-5.8	100.0	56.9	118.7	16.9	2.0	7.3	0.0
1/22/2022	5.1	-8.8	100.0	64.2	62.0	11.1	4.4	13.3	0.0
1/23/2022	1.4	-4.0	99.5	58.7	73.7	16.7	2.6	6.8	0.0
1/24/2022	1.8	-6.3	100.0	70.4	79.7	16.5	4.8	8.5	0.0
1/25/2022	-1.3	-10.3	100.0	78.5	63.3	15.4	1.5	4.7	0.0
1/26/2022	-2.7	-6.7	100.0	90.1	166.2	17.3	5.4	11.9	0.0
1/27/2022	3.5	-8.5	100.0	59.9	88.6	20.4	5.1	22.5	0.0
1/28/2022	3.0	-9.2	100.0	56.1	113.8	18.7	6.8	11.7	0.0
1/29/2022	3.2	-13.4	100.0	38.3	158.6	19.2	4.9	15.0	0.0
1/30/2022	3.8	-13.4	100.0	65.0	115.7	19.2	3.5	7.8	0.0
1/31/2022	-0.8	-11.2	100.0	56.1	118.3	14.3	4.2	24.5	0.0
<b>Monthly Summary</b>	<b>5.4</b>	<b>-5.5</b>	<b>100.0</b>	<b>65.0</b>	<b>111.6</b>	<b>16.0</b>	<b>3.7</b>	<b>8.6</b>	<b>0.0</b>



# CARI Weather Station

Month: February 2/28/2022

Lat N 07° 00.344'

Lon 09° 34.301'

Attitude 273m

Observation Date	Max of AirTemp.Avg	Min of AirTemp.Avg	Max of Humidity.Avg	Min of Humidity.Avg	Average of WindDir.Avg	Max of WindSpd.Avg	Min of WindSpd.Avg	Solar Radiation.Avg	CUM Rainfall
2/1/2022	-0.3	-10.9	100.0	71.7	108.2	17.6	3.7	9.3	0.0
2/2/2022	3.4	-13.1	100.0	63.8	73.5	13.3	4.3	10.0	0.0
2/3/2022	0.7	-8.6	100.0	47.9	114.7	12.1	4.1	7.3	0.0
2/4/2022	-1.6	-9.6	100.0	84.2	166.3	14.0	3.0	6.2	0.0
2/5/2022	-1.3	-13.4	100.0	84.4	151.7	14.2	2.5	8.5	0.0
2/6/2022	-1.6	-11.2	100.0	61.9	99.6	16.8	2.7	6.0	0.0
2/7/2022	0.7	-8.2	100.0	79.9	101.0	17.4	4.1	11.7	0.0
2/8/2022	-0.2	-10.5	100.0	78.3	90.7	17.8	2.7	5.1	0.0
2/9/2022	0.2	-12.1	100.0	63.0	93.3	14.2	1.2	11.9	0.0
2/10/2022	-0.2	-11.3	100.0	67.3	149.2	7.1	2.0	10.5	0.0
2/11/2022	0.0	-12.1	100.0	49.6	150.8	18.5	2.1	8.7	0.0
2/12/2022	3.9	-9.9	100.0	56.4	126.3	15.3	2.8	15.2	0.0
2/13/2022	5.0	-12.0	100.0	48.1	73.8	9.2	1.5	18.7	0.0
2/14/2022	-2.6	-9.9	100.0	62.7	80.5	18.2	4.9	39.2	0.0
2/15/2022	-8.5	-8.5	91.8	91.8	167.0	5.1	5.1	0.0	0.0
<b>Monthly Summary</b>	<b>-0.2</b>	<b>-10.8</b>	<b>99.5</b>	<b>67.4</b>	<b>116.4</b>	<b>14.1</b>	<b>3.1</b>	<b>11.2</b>	<b>0.0</b>

